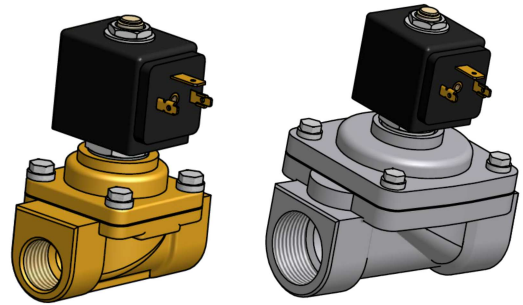


2-WAY HOT WATER & STEAM VALVE

Direct lift, 3/8" - 1", BSP(G)

Features

- General Purpose Solenoid Valve
- 2-way Direct lift Type
- Variety of Media
- Coil Selectability : F or H Coil
- Standard Seals : PTFE, EPDM



Specification

Mechanical features

Major material features

- Body – Brass / Stainless Steel 316
- Seals – PTFE, EPDM
- Sleeve Assembly
 - 303 St Steel (Sleeve)
 - 430FR St Steel
- Plunger – 430FR St Steel

Fluid

- Hot Water, Steam

Rated Voltage & Power Consumption

- Please refer to table #2 on the back side

Applications: Commercial Equipment

- Industrial Laundry Machines
- Industrial Dish Washing Machines
- Institutional Cooking and Food Warming Equipment
- Steam Tables, Steam Cookers/Kettles
- Sterilizers
- Dry Cleaning Equipment and Steam Irons
- Hospital Equipment
- Steam Process

General performance

Response time

- Open / Close time : 80 ~ 150 ms

Ambient temperature

- 0 ~ 50 °C

Fluid temperature

- -20°C to 200°C (PTFE)
- -20°C to 145°C (EPDM)

Port size BSP(G)

- 3/8", 1/2", 3/4", 1"
- (BSPT, NPT, Factory Consulting)

TECHNICAL INFORMATION – STEAM VALVE (TABLE #1)

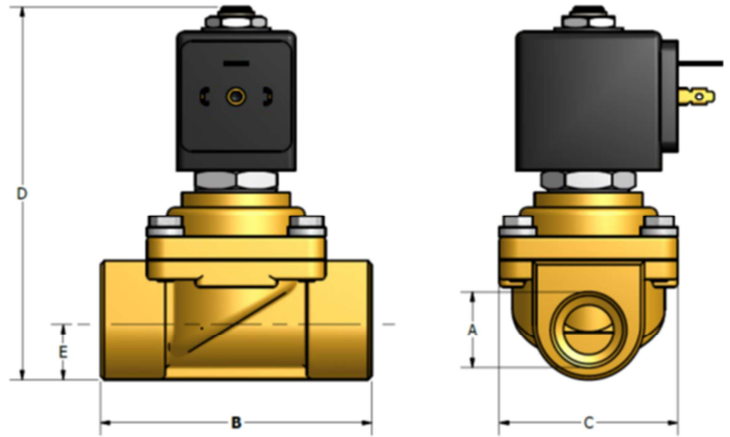
Valve P/N	Enclosure & Coil	Port Size (BSP)	Orifice size (mm)	Flow Factor Kv(L/min)	Sealing	Body material	Admissible differential			Fluid Temperature °C
							Min	AC	DC	
271DG35TC7	492425 H-1H	3/8"	15	65	PTFE	Brass	0	10	10	-20°C - 200°C
271DG45TC7		1/2"	15	65	PTFE	Brass	0	10	10	-20°C - 200°C
271DG56TC7		3/4"	20	130	PTFE	Brass	0	10	10	-20°C - 200°C
271DG67TC7		1"	25	170	PTFE	Brass	0	10	10	-20°C - 200°C
271RG35TC7		3/8"	15	65	PTFE	S.S 316	0	10	10	-20°C - 200°C
271RG45TC7		1/2"	15	65	PTFE	S.S 316	0	10	10	-20°C - 200°C
271RG56TC7		3/4"	20	130	PTFE	S.S 316	0	10	10	-20°C - 200°C
271RG67TC7		1"	25	170	PTFE	S.S 316	0	10	10	-20°C - 200°C

Valve P/N	Enclosure & Coil	Port Size (BSP)	Orifice size (mm)	Flow Factor Kv(L/min)	Sealing	Body material	Admissible differential			Fluid Temperature °C
							Min	AC	DC	
271DG35EC7	491415	3/8"	15	65	EPDM	Brass	0	4	4	-20°C - 145°C
271DG45EC7		1/2"	15	65	EPDM	Brass	0	4	4	-20°C - 145°C
271DG56EC7		3/4"	20	130	EPDM	Brass	0	4	4	-20°C - 145°C
271DG67EC7		1"	25	170	EPDM	Brass	0	4	4	-20°C - 145°C
271RG35EC7		3/8"	15	65	EPDM	S.S 316	0	4	4	-20°C - 145°C
271RG45EC7		1/2"	15	65	EPDM	S.S 316	0	4	4	-20°C - 145°C
271RG56EC7		3/4"	20	130	EPDM	S.S 316	0	4	4	-20°C - 145°C
271RG67EC7		1"	25	170	EPDM	S.S 316	0	4	4	-20°C - 145°C

2-WAY HOT WATER & STEAM VALVE

Dimensions

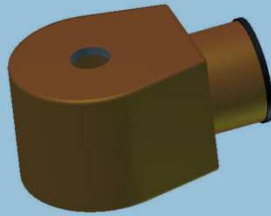
Valve P/N	A	B	C	D	E
	BSPP	[mm]	[mm]	[mm]	[mm]
271_G35TC	3/8"	75	48	101	13.5
271_G45TC	1/2"	75	48	101	13.5
271_G56TC	3/4"	83	60	107	16.5
271_G67TC	1"	100	72	120	21



Coils, Rated Voltage & Power Consumption (Table #2)



Code	Volts/Hz	Watt	Coil
C2	DC24	14	492425
A2	24/50		
A5	110/50	14	492425
F4	230/50		



Code	Volts/Hz	Watt	Coil
C1	DC12		
C2	DC24	14	H-1H
A2	24/50		
OP	100/50,115/60		
A5	110/50	14	H-1H
B7	220/60		
S2	200/50,230/60		
A7	220/50		



Code	Volts/Hz	Watt	Coil
C1	DC12		
C2	DC24	12	491514
B2	24/60		
P3	110/50,120/60		
U3	208-240/60	11	491514
Q3	220/50,240/60		

How to Order

271DG45TC7 - 492425 C2

①

②

③

Example: 271DG45TC7-492425C2
271RG56TC7-H-1HOP

① Valve Vessel
See Table #1

② Enclosure & Coil
481514: 32mm DIN coil, F class
DC 12W, AC 11W
492425: 32mm DIN coil, H class
DC 14W, AC 14W
H-1H: 1/2" Conduit, H class
DC 14W, AC 14W

③ Rated voltage code
See Table #2