

bourdon tube pressure gauges case and ring painted steel DS 1.5", 2", 2.5" (40-50-63mm)

MS7



They can be used with gaseous or liquid media which do not corrode copper alloy, which do not have high viscosity and do not crystallize. They are suitable for pneumatic and hydraulic circuits, compressors, filters and pressure regulators.

1.07.1 - Standard Model

Ranges: from 0...15 psi to 0...3000 psi (from 0...1 bar to 0...250 bar or equivalent units).

Accuracy class: 2,5 as per EN 837-1.

Ambient temperature: -4...+140°F (-20°C...+60°C).

Process fluid temperature: +140°F (+ 60 °C max).

Working pressure: 75% max of full scale range.

Overpressure: not suitable.

Socket material: brass.

Bourdon tube: copper alloy.

Case and ring: steel, black painted.

Window: glass.

Movement: copper alloy.

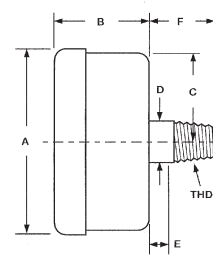
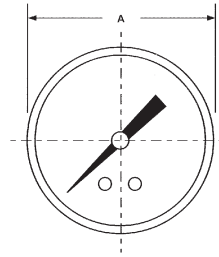
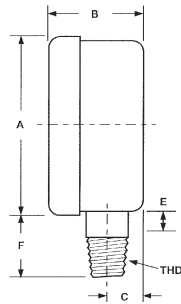
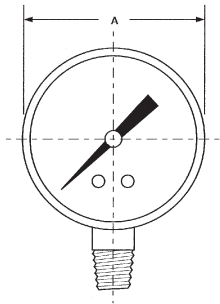
Dial: steel, with galvanic protection, white with black markings.

Pointer: not adjustable, aluminium, black.

bourdon tube pressure gauges
case and ring painted steel, DS 1.5", 2", 2.5" (40-50-63mm)

MS7

RR1 - 03/08



A - LOWER CONNECTION

D - BACK CONNECTION

Mounting	DS	Thd	A	B	C	D	E	F
Lower	A 1.50" (40)	11M - G 1/8 A	1.62"	0.88"	0.27"	0.43"	0.22"	0.43"
		13M - 1/8 NPT	(41,4)	(22,6)	(7,1)	(11)	(5,6)	(11)
Lower	B 2" (50)	21M - G 1/4 A	2.07"	1.03"	0.37"	0.55"	0.18"	0.55"
		23M - 1/4 NPT	(52,6)	(26,2)	(9,4)	(14)	(4,6)	(14)
Lower	C 2.5" (63)	21M - G 1/4 A	2.48"	1.16"	0.38"	0.55"	0.40"	0.55"
		23M - 1/4 NPT	(63,2)	(29,7)	(9,9)	(14)	(10,4)	(14)
Back	A 1.50" (40)	11M - G 1/8 A	1.62"	0.90"	0.79"	0.43"	0.18"	0.43"
		13M - 1/8 NPT	(41,4)	(23,1)	(20,3)	(11)	(4,6)	(11)
Back	B 2" (50)	21M - G 1/4 A	2.07"	1.01"	1.01"	0.55"	0.29"	0.55"
		23M - 1/4 NPT	(52,6)	(25,9)	(25,7)	(14)	(7,4)	(14)
Back	C 2.5" (63)	21M - G 1/4 A	2.48"	1.24"	1.20"	0.55"	0.35"	0.55"
		23M - 1/4 NPT	(63,2)	(31,5)	(30,7)	(14)	(8,9)	(14)

dimensions : inches (mm)

OPTIONS

CPR - Case and ring chromium plated
CPS - Socket material chromium plated
K16 - Accuracy class $\pm 1,6\%$

"HOW TO ORDER" SEQUENCE

Section / Model / Case / Mounting / Diameter / Range / Process connection / Options
1 07 1 A A 11M CPR...K16
D B 13M
C C 21M
23M